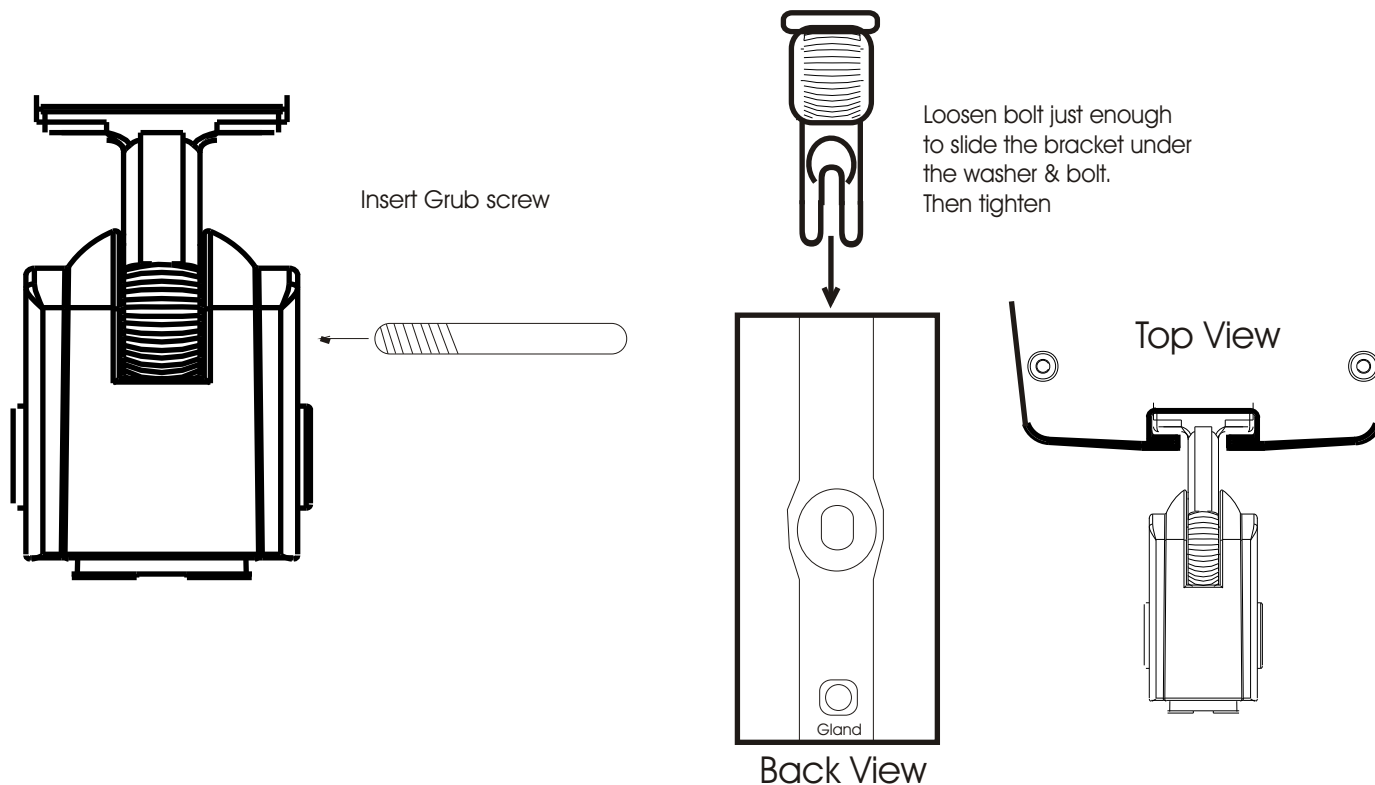




# HIGH PERFORMANCE METAL COLUMN LOUDSPEAKER

MUS20/TC

## Installation instructions



### A. Wall mounting plate.

Drill the required fixing holes using the guide template in the back of the plate, then secure to a suitable surface

### B. Fixing to the Wall Mounting plate.

Locate the MUS to wall plate, insert the retaining bolt, fit wing nut and tighten. Position the speaker as required.

### C. Connections

Remove bottom plate, feed the cable through the gland and terminate to terminal block, refit plate and tighten the gland.

