

VANDALPROOF BI-DIRECTIONAL METAL CABINET Loudspeaker



➤ SENTRY6/BDTC

TECHNICAL SPECIFICATIONS

Rated power, Watts	6
Tappings 100 volt line, Watts	6/3/1.5/0.75
Transformer Impedance, Ohms, 100V	1.67k/3.33k/6.66k/13.3k/40k
Tappings 70.7 volt line, Watts	3/1.5/0.75/0.375/0.125
Driver impedance, Ohms	4 (single driver:8)
Effective frequency range, Hz (BSEN60268-5)	170 – 10,000
S.P.L. @ 1m, 1 watt, dB, Test Signal Bandwidth 100Hz-10kHz	88
S.P.L. @ Full power Octave Bandwidth, dB	96
Acoustic Power (dB-PWL@1 watt) 1k/2kHz, dB	90/89
Dispersion at 1k/2k Hz, Degrees	70/60
Directivity Axial Q factor, 1k/2kHz	0.6/0.7
Dimensions, front & depth, mm	210 x 130 x 98
Net weight, Kgs	2
Colour/Finish	White RAL9016
Material	Steel
Mounting	Screw

➤ BS5839 Part 8 voice alarm compliant

Speaker measured front on (90° off axis to speakers)

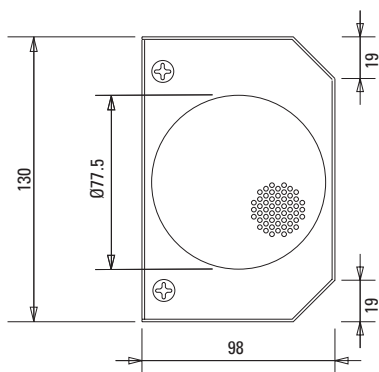
EASE, CATT, ULYSSES and Architectural specifications are supplied on the disc inserted at the back of this folder
Manufacturer reserves the right to alter specifications without notice – March 2007

SENTRY6/BDTC

VANDALPROOF BI-DIRECTIONAL METAL CABINET LOUDSPEAKER

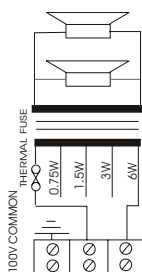
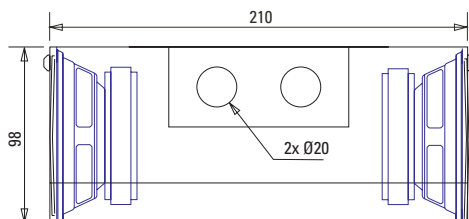
side view

unit: mm



top view

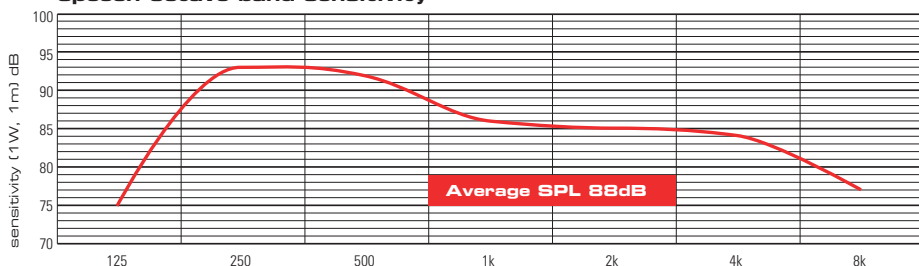
unit: mm



circuit diagram

CE

speech octave band sensitivity



Effective Frequency Range

Frequency Hz

SENTRY6/BDTC 170Hz - 10,000Hz



Penton UK Ltd

Unit 2 Teville Industrials | Dominion Way | Worthing | West Sussex | BN14 8NW

T: +44 (0)1903 215315 | F: +44(0)1903 215415 | E: SALES@PENTONUK.CO.UK

www.penton.org